



Circulate to:	Service Manager	Body Shop Manager	Parts Manager	Foremen	Receptionists	Technicians

**Subject/Concern:** Hesitations or weak pull away following cold start; Unstable idle for approximately one minute following cold start

**Model:** Focus 2011.25 (12/2010–)  
 Build Date: 06.12.2010 – 04.10.2011  
 Build Code: AG – BU  
 Assembly Plant: Saarlouis  
 Engine: 1.6L Duratec-16V Ti-VCT (Sigma)  
 Transmission/Transaxle: 5-Speed Manual Transaxle (iB5)  
 Focus 2011.25 (12/2010–)  
 Build Date: 07/2011 – 04.10.2011  
 Build Code: BS – BU  
 Assembly Plant: St. Petersburg  
 Engine: 1.6L Duratec-16V Ti-VCT (Sigma)  
 Transmission/Transaxle: 5-Speed Manual Transaxle (iB5)

**Markets:** All

**Section:** 310-01

**Summary**

Should a customer express concern about hesitations or weak pull away following cold start (typically during first 40 seconds, can be longer in some cases) and unstable idle for approximately one minute following cold start (typically between 10°C and 25°C ambient temperature), the probable cause is early life accumulation of carbon in the combustion chamber.

To rectify this concern, the Powertrain Control Module (PCM) should be re-programmed with the latest PCM calibration. The calibration update improves the idle stability and reduced pull away hesitations.

**⚠ CAUTION: Make sure that the fuel tank is filled up at least to ¼ of the tank capacity. If required, advise the customer to fill the tank to ¼ of the tank.**

To clean the combustion chamber deposits a cleaning agent should be added once to the fuel tank. For this purpose a cleaning additive has been tested and proven to reduce the deposits. The cleaning additives are developed by supplier Chevron and marketed as Techron® Concentrate Plus – Gasoline Fuel System Cleaner this additive is available as a 350ml bottle, a single bottle this size is required to treat each vehicle.

**⚠ CAUTION: It is advised that this is the only product that has been approved for use in reference to this concern, use of other additives is strongly discouraged and may cause further engine and emissions system damage.**

The cleaning additive will be delivered by the supplier Chevron Lubricants. The required contact/telephone/fax-no. is attached to this service instruction.

Labor Times published in this TSB are available from 24.10.2011 onwards. Please refresh your Labor Master file at that day to receive the new data in your Dealer Management System. Please contact your internal system administrator.

**For markets where FordEtis IDS is used, connect FordEtis IDS and select the appropriate symptoms from the concern descriptions above. Follow the FordEtis IDS instructions to rectify this concern. For markets where FordEtis IDS is not available, use the IDS standard portable diagnostic unit. To rectify this concern follow the attached service repair instruction.**

**Parts Required**

**Description**

Techron® Concentrate Plus – Gasoline Fuel System Cleaner (350 ml)  
 (One bottle size is required to fix one vehicle)

**Finis Code**

Techron®  
 Concentrate Plus;  
 Product Number:  
 002840

**Quantity**

1

**Labor Time**

**Operation Description**

IDS - Vehicle Connection/Communication  
 IDS - Powertrain Control Module (PCM) - Reprogram  
 Adding Cleaning Agent to the Fuel Tank

**Operation No. / Time**

29 099 0  
 29 120 5  
 710011D47

**Repair/Claim Coding**

Causal Part: 23594  
 ACES Condition Code: 49

### Production Action

An updated calibration of the PCM (BV61-12A650-BF) has been introduced into production since 05.10.2011 (build code BU).

### Service Information

**Techron® Concentrate Plus – Gasoline Fuel System Cleaner (350 ml)**



E142045

Item	Description
-	Product Number: 002840

### Service Instruction

See Summary.

For markets where FordEtis IDS is used, connect FordEtis IDS and select the appropriate symptoms from the concern descriptions above. Follow the FordEtis IDS instructions to rectify this concern.

**NOTE:** The warranty claims payment system will expect an RVC with any related warranty claim to avoid possible claim rejection.

For markets where FordEtis IDS is not available, follow the service repair instruction below:

### IDS - Vehicle Connection/Communication

1. Connect IDS portable diagnostic unit to the vehicle and establish communication (VID the vehicle).
  - Confirm the vehicle details are correct.
2. Check for the PCM part no through IDS.
  - If PCM part no is reported as BV61-12A650-**AC/AD/BC/BD**, go to next step.
  - If any other PCM part no is reported this service instruction is not valid.

### Reprogram the PCM

1. Reprogram the PCM using IDS.
    - Select the <Toolbox> tab at the top of the screen.
    - Select <Module Programming> and then press the tick.
- NOTE:** Do NOT update the calibration from AE to AF or BE to BF.
- Select <Module Reprogramming> and then <PCM>.
    - Update the calibration to **AE** for 77kW/105PS or **BE** for 92kW/125PS.
    - Press the tick.

1.6L Duratec-16V Ti-VCT (Sigma)		Calibration
77kW/105PS	ABS + ESP	BV61-12A650-AF (cal file = BV61-14C204-JF)
92kW/125 PS		BV61-12A650-BF (cal file = BV61-14C204-KF)
77kW/105PS	ABS only	BV61-12A650-BNB (cal file = BV61-14C204-BNB)
92kW/125 PS		BV61-12A650-BPB (cal file = BV61-14C204-BPB)

2. Module Reprogramming starts. Follow the on screen instructions and confirm.
3. Disconnect IDS standard from the vehicle.

### Adding cleaning agent to the fuel tank

1. **NOTE:** Make sure that the fuel tank is filled up at least to ¼ of the tank capacity.

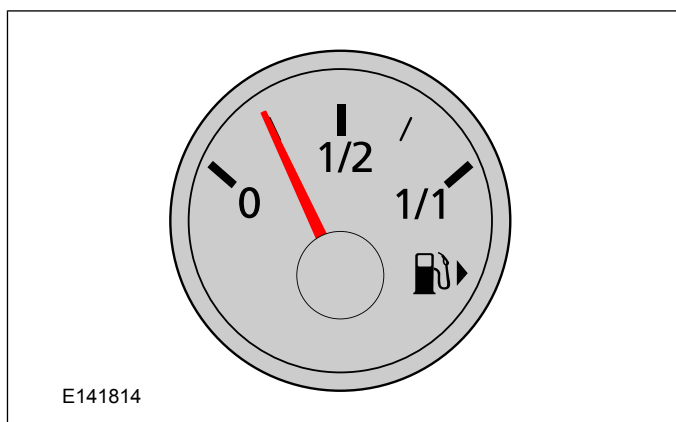
If required, advise the customer to fill the tank to ¼ of the tank.

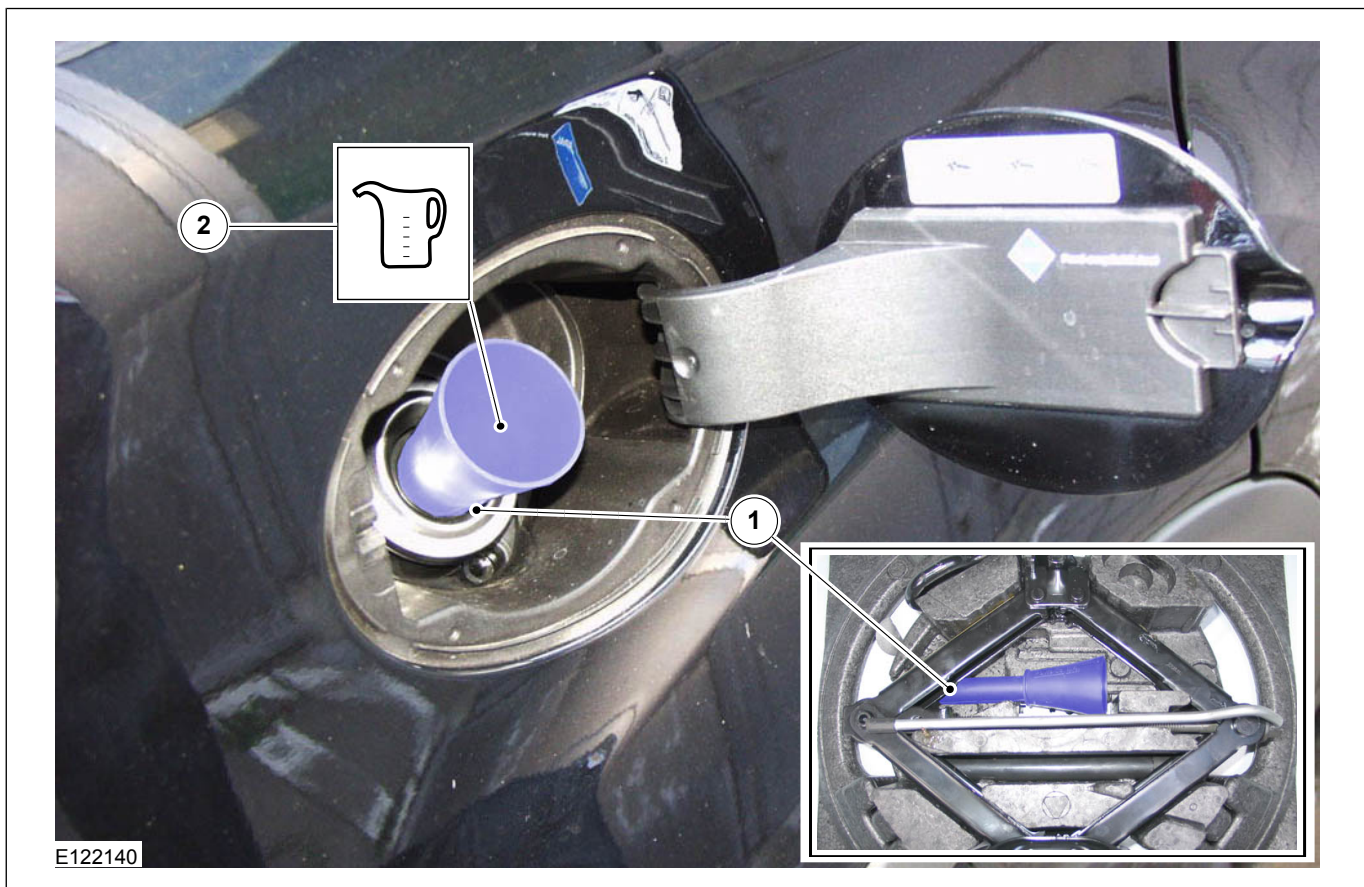
2. **⚠ CAUTION:** It is advised that this is the only product that has been approved for use in reference to this concern, use of other additives is strongly discouraged and may cause further engine and emissions system damage.

**NOTE:** Use a suitable funnel or the suitable adapter which is contained in the vehicle tool kit to add the fluid.

Add the cleaning agent (see parts Required) to the fuel tank

1. Insert the adapter.
2. Add the cleaning agent (350ml) to the fuel tank.





3. On returning the vehicle to the customer for the best cleaning performance advise the customer of the following:

- If the fuel tank was below  $\frac{1}{2}$  full when the additive was added, advise the customer to fill the tank at the next opportunity.
- Try to avoid repeated short journeys or extended periods of engine idle.
- Do not labor the engine, ensure you are in an appropriate gear for the road speed.
- The customer can drive the vehicle with the rest of the additive in the tank.

## Table Attachment 1

## Chevron Products - www.chevron.com

Product*	Supplier	E-Mail	Telephone	Fax
Techron® Concentrate Plus; Product Number: 002840	Unipart Leisure and Marine Ltd Parkwood House Charter Avenue Canley Coventry UK CV4 8DA	carcare@unipart.co.uk	0044 (0) 2476 427333	0044 (0) 2476 427361

\* Material Safety Data Sheets can be down loaded from the following site: <https://cglapps.chevron.com/msdspds/HomePage.aspx>